

Indirect Survey Manager

APPLICATION

The Indirect Survey Manager (ISM) is a module within the Pipeline Compliance System (PCS™), the industry leader in managing compliance information for natural gas, hazardous liquids, and other pipeline systems. ISM manages and aligns External Corrosion Direct Assessment (ECDA) indirect inspection data.

- Close interval (CIPS)
- DCVG (Direct current voltage gradient)
- ACVG (AC voltage gradient)
- ACCA (AC current attenuation)
- Soil resistivity



Indirect Survey Manager

KEY BENEFITS

Create custom reports and graphs with multiple survey types for year over year with spike filtering option

Review all surveys on one graph; layer year-over-year data alongside various types of surveys to identify degenerative situations.

Advanced capabilities include rubber-banding, Reversal of readings, shift stationing, and appending surveys

Re-align station numbers for a survey and view data in a variety of ways for maximum survey efficiency.

Data import and export options, including integrated bridge reports

Import and export data via bridge in Excel, CSV, or similar file formats, as well as with third party contractors and vendors.

Multi-user design for replication and synchronisation

Share critical data throughout an organisation.

Collect, analyse, report, and graph close interval and DCVG survey data

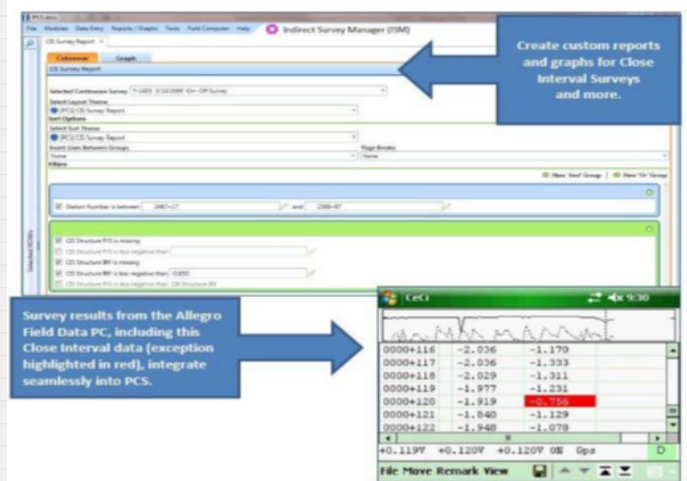
Exception reporting for interval surveys including -0.850 mV criteria, % IR, dB level, and indication classification type.

Integration with Allegro Field Data PC™ and Bullhorn Web for accurate and verifiable CP data collection

Increases productivity by creating a seamless workflow from data collection to reporting; prevents transcription errors.

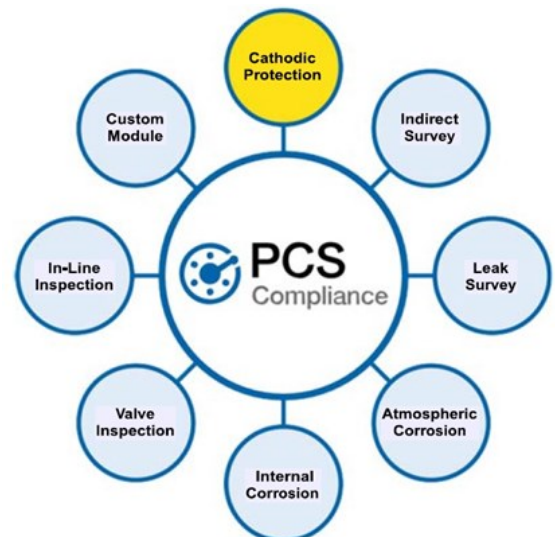
Data exchange with GIS, risk assessment, work management, and other external applications

Integrate with current and future IT systems and processes.



The Indirect Survey Manager aligns External Corrosion Direct Assessment (ECDA) indirect inspection data. Close interval survey data is captured and analysed, ensuring compliance requirements defined in DOT 49 CFR, Parts 192 and 195 are met. Deficiency reports and graphs quickly reveal areas of concern leading to targeted maintenance and repair actions.

GPS data is retained for clean integration with GIS and mapping applications.



Indirect Survey Manager

SYSTEM REQUIREMENTS

Server computer requirements

Properties	Recommended
Processor:	Intel Xeon
Processor Speed:	2 Quad Core CPUs at 2.4GHz or faster
RAM:	32GB (see note)
Operating System:	Windows Server 2008 R2
Relational Database Software:	SQL Server 2008 R2
Available Disk Space:	100 GB (see note)
Screen Resolution:	1920 x 1080

Client computer requirements

Properties	Recommended
Processor:	Intel Core i7
Processor Speed:	2.3 GHz or faster
RAM:	8GB
Operating System:	Windows 7 64-bit, Service pack 1 (SP1)
Available Disk Space:	720 GB (see note)
Screen Resolution:	1920 x 1080
Microsoft.NET Framework:	Version 4.5 (see note)

Notes:

- Microsoft.NET Framework: If the target computer does not have Microsoft.NET Framework v 4.5 installed, the PCS Axis installation automatically installs it for you. This feature requires an active internet connection to complete the installation of .NET Framework v4.5.
- Microsoft SQLServer Express 2008 R2 SP2, 64-bit: For client systems that wish to use Synchronization, a 64-bit version of Microsoft SQL Server 2008 Express R2 SP2 (or standard edition for databased exceeding 10GB), must be installed on the subscriber's computer (the remote client). Once PCS Axis is installed, a subscription database must be created on the subscribers computer prior to working off-line.
- Microsoft SQL Disk space with Synchronization: If using a remote client to subscribe to and synchronize with a central database use (11GB when using Microsoft SQL Server 2008 Express).

Indirect Survey Manager

FOR MORE INFORMATION

Services

- Expect excellent service from our remote monitoring technical services team
- Technical support is provided by NACE certified professionals via phone and email
- Product training, offered at your place of business or at our Grantham offices
- Application services, implementation, data collection and loading, system integration, and administration services

Contact

For further information, contact us on sales@cathodic.co.uk or call us on +44 (0)1476 590666

In the US, email us at pcsa_sales@aiworldwide.com or call us at 800-229-3404 or visit us online at aiworldwide.com for these resources:

[PCS Why should I upgrade?](#)

[PCS Support](#)

[PCS Axis help](#)

About American Innovations

American Innovations (AI) protects people and the environment by helping our customers safely and efficiently manage the world's energy infrastructure. We deliver proven compliance solutions to virtually every oil and gas transmission pipeline company in North America – from the field to the office. We provide an integrated family of hardware, software and professional services backed by excellent customer service. Our products include: Bullhorn® remote monitoring units, MicroMax® current interrupters, Allegro™ Field Data PCs, PCS™ compliance software, and Risk Intelligence Platform (RIPL™) software. AI also provides a wealth of professional services including equipment installation, software administration, data collection and loading, risk analysis, and high consequence area (HCA) analysis, and regulatory compliance consulting.