



PERMANENT STEEL TEST STATION



REVISION 1

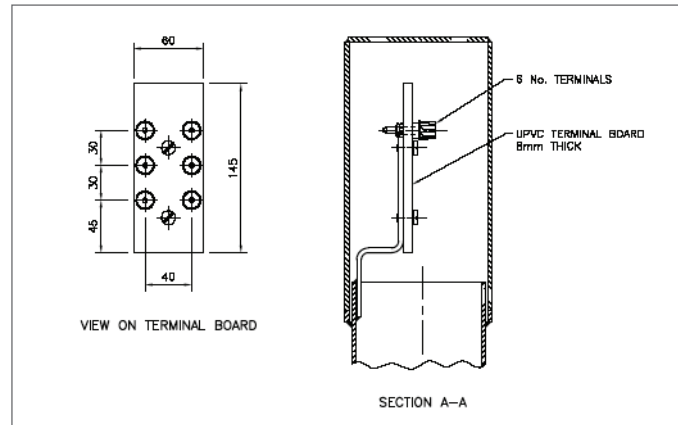
APPLICATION

A permanent durable steel test station used for the measurement of pipe to soil potentials, current flow, testing of insulated flanges, resistance bonds, anode outputs etc.

STEEL TEST STATION DATA

Length :	1,600mm
Diameter :	127mm
Wall Thickness :	4mm
Terminals :	To suit customer requirement but typically 6 terminals mounted on a non conductive phenolic / PVC board 8mm Thick
Finish :	Shot Blast to SA 2.5 Galvanised (Optional) Powder Coat Painted To 150 Microns T.D.F.T.
Colour :	Yellow RAL 1018
Security :	Cap fixed to post with Torx tamper proof screws

CAP AND TERMINAL BOARD LAYOUT





PERMANENT STEEL TEST STATION



REVISION 1

GENERAL LAYOUT AND FINISH DETAILS

