

Magnesium Anode

APPLICATION

Magnesium Anodes are used to achieve cathodic protection of buried pipelines and other buried structures such as tank bases, vessels, valves and hydrants. Suitable for use in soils, mud, and fresh water. Typically used for temporary cathodic protection on newly installed structures.



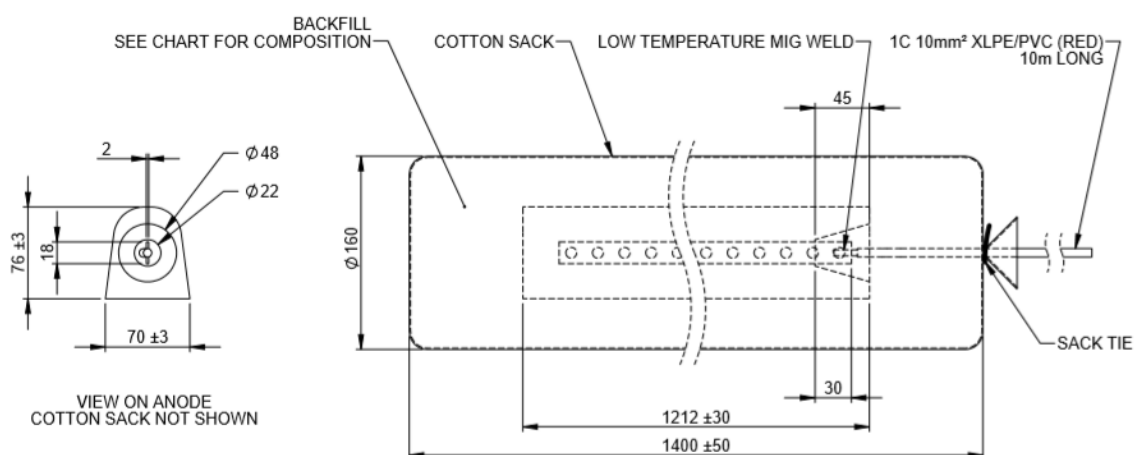
CHEMICAL COMPOSITIONS OF CAST MAGNESIUM ANODES

Element	Anode Type				
	High Potential	AZ63B(HIA)	AZ63C(HIB)	AZ63D(HIC)	AZ31
Mg	Bal	Bal	Bal	Bal	Bal
Al	<0.01	5.30-6.70	5.30-6.70	5.0-7.0	2.70-3.50
Zn	-	2.50-3.50	2.50-3.50	2.0-4.0	0.70-1.70
Mn	0.50-1.30	0.15-0.70	0.15-0.70	0.15-0.70	0.15-0.60
Si(max)	0.05	0.10	0.30	0.30	0.05
Cu(max)	0.02	0.02	0.05	0.10	0.01
Ni(max)	0.001	0.002	0.003	0.003	0.003
Fe(max)	0.03	0.005	0.005	0.005	0.005
Other Imp.(max)	Each	0.05	-	-	-
	Total	0.30	0.30	0.30	0.30

Magnesium Anodes

Standard Anode Types and Weights—D Shape

Bare Weight (lbs)	Bare Weight (kgs)	Approx. Width Bare (mm)	Approx. Length Bare (mm)	Approx. Height Bare (mm)	Approx. Pre-packaged Gross Weight	Bare Anode UK Stock (High Potential)
9	4.1	88.9	352.4	95.3	9.5	<input checked="" type="checkbox"/>
17	7.7	88.9	641.4	95.3	15	<input checked="" type="checkbox"/>
20	9.1	88.9	504.8	95.3	20	<input type="checkbox"/>
32	14.5	139.7	504.8	146.1	30	<input checked="" type="checkbox"/>
48	21.7	139.7	765.2	146.1	45	<input type="checkbox"/>
60	27.2	114.3	1460.5	114.3	50	<input type="checkbox"/>



STANDARD PRE-PACKAGED ANODES

Weight: As shown in the table above. Alternative weights and dimensions available upon request

Cables: Single stranded copper conductor 1x10mm² XLPE/PVC (Red), 600/1000V grade 10m long (or to client specification)

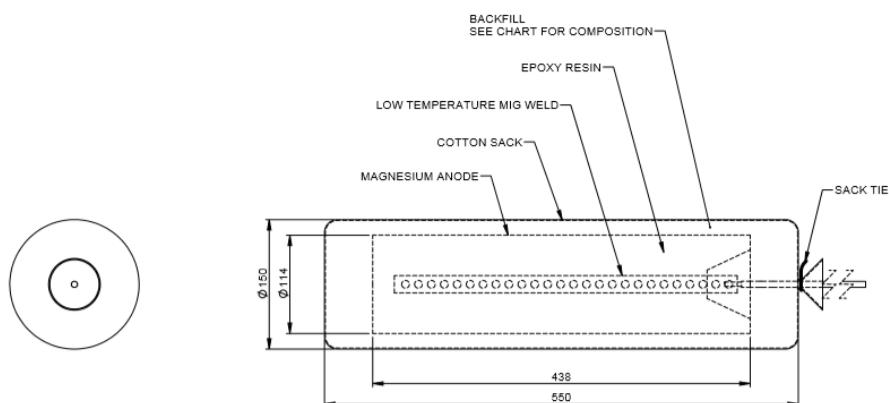
Standard Backfill:

Gypsum	75%
Bentonite	20%
Sodium Sulphate	5%

Magnesium Anodes

Standard Anode Types and Weights—C Shape

Bare Weight (kgs)	Approx. Diameter (mm)	Length (mm)		Approx. Pre-packaged Gross Weight	Bare Anode UK Stock (High Potential)
		High Potential	AZ63		
2.6	75	336	325	9.5	<input type="checkbox"/>
3.7	114	202	193	9.5	<input type="checkbox"/>
4.2	114	230	220	9.5	<input type="checkbox"/>
7.7	114	431	412	15	<input checked="" type="checkbox"/>
10.2	114	560	536	20	<input type="checkbox"/>
14.7	146	494	472	30	<input checked="" type="checkbox"/>
22.9	178	520	497	50	<input type="checkbox"/>
28.2	114	1528	1462	50	<input type="checkbox"/>



STANDARD PRE-PACKAGED ANODES

Weight: As shown in the table above. Alternative weights and dimensions available upon request

Cables: Single stranded copper conductor 1x10mm² XLPE/PVC (Red), 600/1000V grade
10m long (or to client specification)

Standard Backfill:

Gypsum	75%
Bentonite	20%
Sodium Sulphate	5%

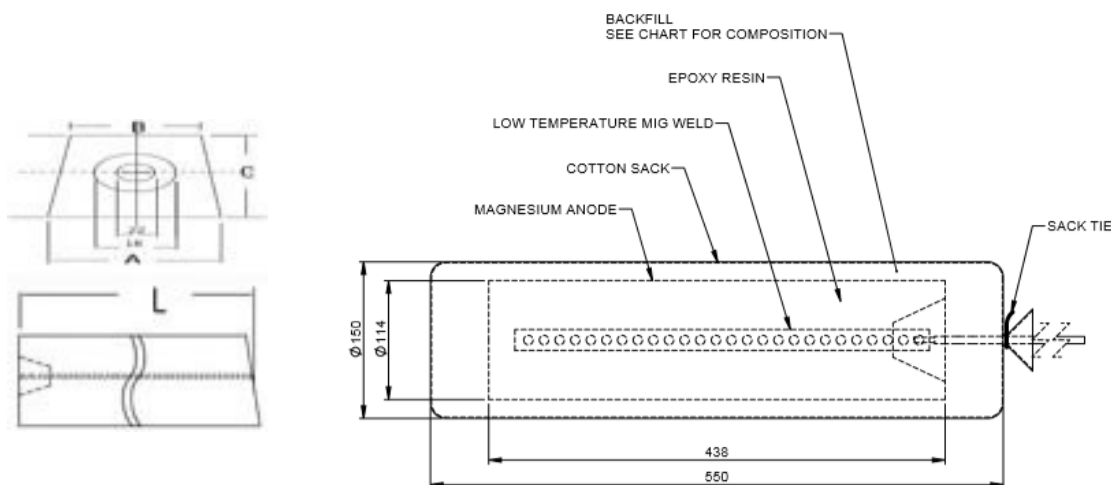


CATHODIC
PROTECTION
CO LTD

Magnesium Anodes

Standard Anode Types and Weights—S Shape

Bare Weight (kgs)	Approx. Width mm (A)	Approx. Diameter mm (B)	Approx. Height mm (c)	Approx. Length (L)	Approx. Pre-packaged Gross Weight	Bare Anode UK Stock (High Potential)
4.1	96.5	76.2	76.2	345.4	9.5	☐
7.7	101.6	81.3	101.6	457.2	15	☐
9.1	71.1	50.8	50.8	1574.8	20	☐
14.5	127.0	106.7	127.0	538.5	30	☐
27.2	101.6	81.3	101.6	1574.8	50	☐



STANDARD PRE-PACKAGED ANODES

Weight: As shown in the table above. Alternative weights and dimensions available upon request

Cables: Single stranded copper conductor 1x10mm² XLPE/PVC (Red), 600/1000V grade
10m long (or to client specification)

Standard Backfill:

Gypsum	75%
Bentonite	20%
Sodium Sulphate	5%