



CARBONACEOUS BACKFILL

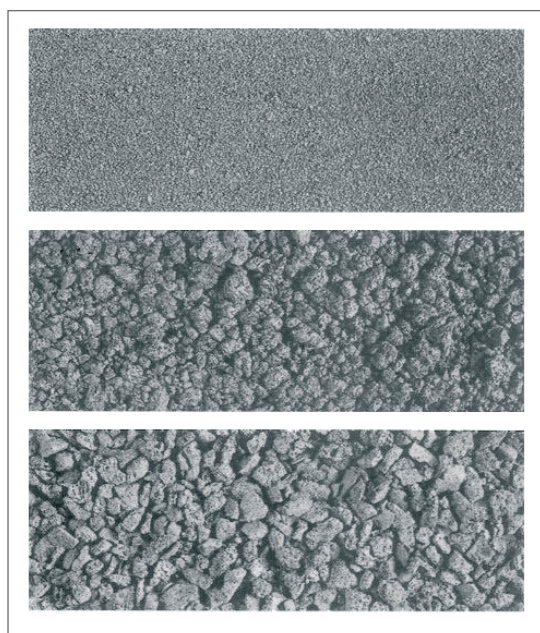


REVISION 1

APPLICATION

Impressed current cathodic protection groundbeds and packaged impressed current anodes.

CARBONACEOUS BACKFILL DATA



TYPICAL ANALYSIS

Chemical Composition (%)	OPTIMA DBW	OPTIMA SP
Ash	0.2	12 max
Volatiles	0.3	1.5 max
Moisture	0.3	10
Fixed Carbon	99.2	86.5 min (dry basis)
Sulphur	1.0	1.5 max
Silicon	168 ppm	1.0
Iron	83 ppm	1.1
Size Grading	0.25 - 1mm	0 -10mm
Resistivity @ 150psi	0.1 Ohm cm	0.5 Ohm cm
Products supplied in 25kg multi walled paper bags, stacked on pallets and shrinkwrapped. Alternatively 1 tonne bulk bags on pallets and shrinkwrapped		